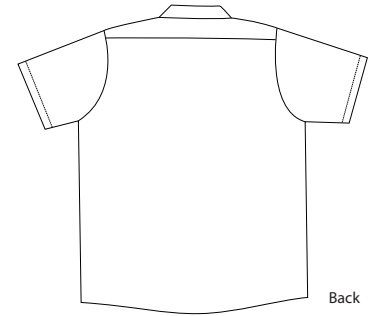


# Ladies Short Sleeve Squared Hem Industrial Work Shirt



## SP23

- \* 4.25-ounce \* 65/35 poly/cotton with soil release \* Open collar with sewn-in stays
- \* Melamine buttons \* Two button-through pockets with bartacked pencil stall in left pocket \*
- Metal collar gripper snap \* Squared hem \* Reverse placket

### Care Instructions:

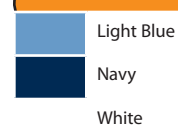
Machine wash, tumble dry.

\*Meets IL50 specifications

### Finished Measurements in Inches

Size	S	M	L	XL	2XL	3XL	4XL
Chest	41	43.5	46.5	50.5	54.5	58.5	62.5
Length	26.25	26.75	27.25	27.75	28.25	28.75	29.25
Shoulder	15.25	16.5	17.75	19	20.25	21.5	22.75
Neck	14.5	15.5	16.5	17.5	18.5	19.5	20.5
Sleeve	9 1/8	9.25	9 3/8	9.50	9 5/8	9.75	9 7/8

### Colors



### Please Note:

Colors shown are approximate and for reference only. For closest match see PMS colors, or for exact match, returnable samples and grommited samples are available.

### Color Chart

Base Color	Light Blue	Navy	White
Textile PMS	16-4021TC	19-1102TC	11-0601TC
General PMS	652C	539C	7541C