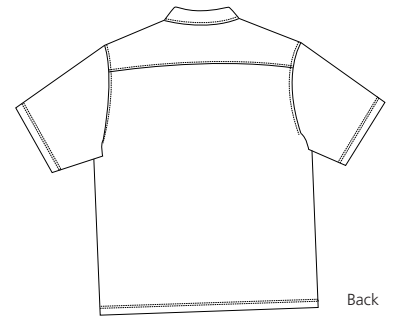
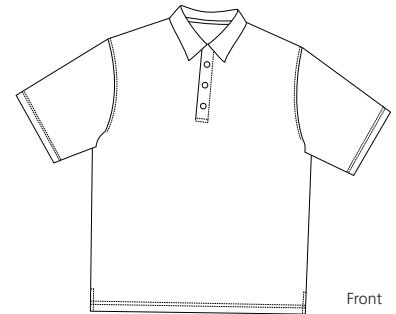




RED HOUSE

THE WINE COUNTRY LIFESTYLE



TEXTURED SILK POLO

RH10

Expertly crafted silk blend fabric feels smooth on the inside, pique knit adds compelling texture to the outside.

- 70/30 silk/cotton, 6.2 oz
- Self-fabric collar
- Throat latch
- Natural shell buttons



Care Instructions:

Machine wash cold. Wash inside out.
Wash with like colors. Do not bleach.
Tumble dry low. Warm iron if necessary.

Finished Measurements in Inches								
Size	XS	S	M	L	XL	2XL	3XL	4XL
Chest	19	20.5	21.5	23.5	25.5	27	28.5	30
Body	25.5	26.5	30	31	32	33	33.5	34
Sleeve	9	9.5	11	11.5	12	12.5	13	13.5
Shoulder	17	18	19.5	21	22.5	23.5	24.5	25.5
Collar	15.5	16	16.5	14	14.5	18	18.5	19
Placket	8	8	8	8	8	8	8	8

Colors	
	Citron
	Claret
	Insignia Blue
	Jade
	Steel Grey
	Winter White

Chest measured 1" under arm hole. Body length measured from center back neck seam to hem.
Sleeve measured from shoulder seam to hem. Shoulder width measured from arm hole to arm hole.
Collar measured by circumference. Placket measured by length, including box.

Please Note:

Colors shown are approximate and for reference only. For closest match see PMS colors, or for exact match, returnable samples and grommited samples are available.

Color Chart						
Colors	Citron	Claret	Insignia Blue	Jade	Steel Grey	Winter White
Textile PMS	120C	209C	7546C	556C	431C	No Match
General PMS	12-0825TC	19-1840TC	19-4019TC	16-5907TC	18-3910TC	11-0701TC
Madeira Classic	1066	1182	1364	1047	1041	1072

Red House Embroidery Recommendations *Provided by the Embroidery Trade Association*

RH10 – Textured Silk Polo
Backing: 1 oz cut-away with inner layer ripstop patterned nylon
Thread: 40 weight
Soluble topping recommended.
Needle: Ball point

Notes: Embroiders well with letters or lines at least 2 mm wide. Good garment for most designs under 12,000 stitches. Designs over 12,000 stitches will become too heavy and wrinkle the fabric. Do not pack stitches too tightly or they will curl after cleaning. The fabric takes digitized small letters and narrow columns well.

This information is intended to serve as a guideline for embroiderers. SanMar is not responsible for the compromised integrity of Red House fabrics due to embroidery or decoration.