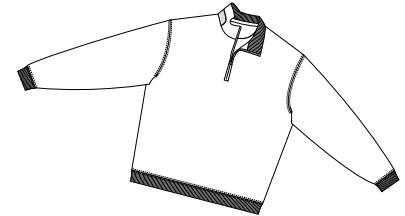
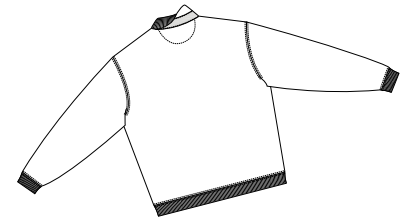




RED HOUSE
THE WINE COUNTRY LIFESTYLE



Front



Back

PIMA INTERLOCK 1/4 ZIP PULLOVER RH09

Our soft Pima cotton takes on the sleek look and feel of interlock knit.

- 100% Pima cotton, 8.6 oz
- Twill tape on outside collar
- Grosgrain trim along inside neck
- Set-in sleeves
- Antique brass zipper with embossed leather zipper-pull



Care Instructions:

Machine wash cold. Wash inside out.
Wash with like colors. Do not bleach.
Lay flat to dry. Warm iron if necessary.

Finished Measurements in Inches								
Size	XS	S	M	L	XL	2XL	3XL	4XL
Chest	20.5	22	23	25	27	28.5	30	31.5
Body	25.5	26.5	28.5	29.5	30.5	31.5	32	32.5
Sleeve	33	35	36	37	38	38.75	39.75	40.5
Shoulder	19	20	21.5	23	24.5	25.5	26.5	27.5
Collar Ht	2.5	2.5	2.5	2.5	2.5	2.5	2.5	2.5
Zipper	9	9	9	9	9	9	9	9

Colors	
	Black
	Bright Blue
	Ruby
	Steel Grey

Please Note:

Colors shown are approximate and for reference only. For closest match see PMS colors, or for exact match, returnable samples and grommets are available.

Chest measured 1" under arm hole. Body length measured from high point shoulder seam, down front, to hem.
Sleeve measured from center back neck seam to hem. Shoulder width measured from arm hole to arm hole.
Collar height measured center back. Zipper length measured top to bottom.

Color Chart				
Colors	Black	Bright Blue	Ruby	Steel Grey
Textile PMS	426C	659C	1955C	431C
General PMS	19-5320TC	17-3936TC	19-1862TC	18-0201TC
Madeira (Tonal Emb)	1007	1275	1238	1041

Red House Embroidery Recommendations *Provided by the Embroidery Trade Association*

RH09/RH08 – Pima Interlock 1/4 Zip Pullover & Ladies Pima Interlock Jacket

Backing: 3 oz cut-away
Thread: 40 weight
Soluble topping recommended for very small letters and fine detail.
Needle: Ball point
Notes: Keeping the needles small, this will embroider well with just about any type of stitch and design.

This information is intended to serve as a guideline for embroiderers. SanMar is not responsible for the compromised integrity of Red House fabrics due to embroidery or decoration.