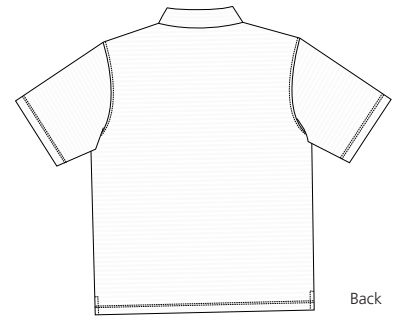
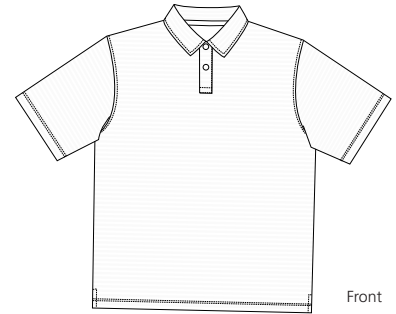




RED HOUSE

THE WINE COUNTRY LIFESTYLE



Care Instructions:
Machine wash cold.
Lay flat to dry.

PIMA TONAL STRIPE POLO

RH07

The longer, stronger staple of Pima cotton provides the perfect foundation for this subtly textured, tonal stripe design.

- 100% Pima cotton, 5.3 oz
- Self fabric collar
- Engraved Red House buttons

Finished Measurements in Inches								
Size	XS	S	M	L	XL	2XL	3XL	4XL
Chest	19	20.5	21.5	23.5	25.5	27	28.5	30
Body	26	27	30.5	31.5	32.5	33.5	34	34.5
Sleeve	9	9.5	11	11.5	12	12.5	13	13.5
Shoulder	17	18	19.5	21	22.5	23.5	24.5	25.5
Collar	16.75	17.25	17.75	18.25	18.75	19.25	19.75	20.25
Placket	5.25	5.25	5.25	5.25	5.25	5.25	5.25	5.25

Colors	
	Azure Blue
	Coral
	Sand
	Steel Grey

Please Note:
Colors shown are approximate and for reference only. For closest match see PMS colors, or for exact match, returnable samples and grommeted samples are available.

Chest measured 1" under arm hole. Body length measured high point shoulder to front bottom hem.
Sleeve measured from shoulder seam to hem. Shoulder width measured from arm hole to arm hole.
Collar measured by circumference along neck seam. Placket measured by length, including box.

Color Chart				
Colors	Azure Blue	Coral	Sand	Steel Grey
General PMS	652C	No Match	No Match	431C
Textile PMS	16-4019TC	16-1620TC	13-0908TC	18-5606TC
Madeira (Tonal Emb)	1075	1220	1084	1041

Red House Embroidery Recommendations *Provided by the Embroidery Trade Association*

RH07 – Pima Tonal Stripe Polo

Backing: 3 oz cut-away or tear-away
Thread: 40 weight
Soluble topping not rec
Needle: Ball point

Notes: Keep designs light. A very tight fill stitch will cause the fabric to curl. Hoop with backing and take care not to stretch the fabric.

This information is intended to serve as a guideline for embroiderers. SanMar is not responsible for the compromised integrity of Red House fabrics due to embroidery or decoration.