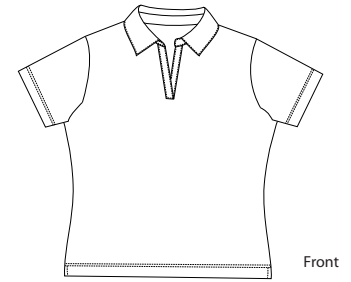
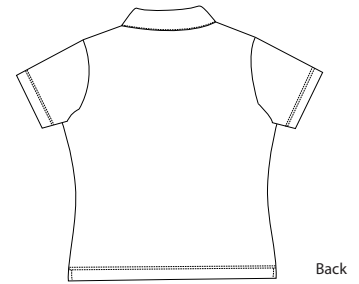




RED HOUSE
THE WINE COUNTRY LIFESTYLE



Front



Back

LADIES DOUBLE MERCERIZED POLO

RH05

Our fine knit jersey polo is double mercerized for remarkable color and luster.

- 100% two-ply cotton, 4.4 oz (Colors) RH04/05 – 5.3 oz (White)
- Self-fabric collar and split placket
- Red House engraved buttons and embroidery on lower right sleeve



Care Instructions:
Machine wash cold.
Lay flat to dry.

Finished Measurements in Inches								
Size	XS	S	M	L	XL	XXL	Plus 1X	Plus 2X
Chest	18.5	19.5	20.5	21.5	23	24.5	27	30
Body	23	23.5	24	24.5	25.25	26	29	30
Sleeve	7.25	7.5	7.75	8	8.25	8.5	9.5	10.5
Shoulder	15	15.5	16	16.5	17.25	18	20	22
Placket	5	5	5	5	5	5	5	5

Chest measured 1" under arm hole. Body length measured from center back neck seam to hem.
Sleeve measured from shoulder seam to hem. Shoulder width measured from arm hole to arm hole.
Placket measured by length.

Colors	
	Black
	Bright Blue
	Sand
	Shell
	Turquoise
	White

Please Note: Colors shown are approximate and for reference only. For closest match see PMS colors, or for exact match, returnable samples and grommeted samples are available.

Color Chart						
Colors	Black	Bright Blue	Sand	Shell	Turquoise	White
General PMS	Process Black	284C	No Match	7422C	311C	No Match
Textile PMS	19-5320	17-4030TC	13-0907TC	14-1511TC	16-4725TC	11-0602TC
Madeira (Tonal Emb)	1007	1276	1072	1113	1094	1002

Red House Embroidery Recommendations Provided by the Embroidery Trade Association	
<p>RH04/05 – Double Mercerized Polo & Ladies Double Mercerized Polo</p> <p>Backing: 3 oz cut-away Thread: 40 weight Soluble topping recommended on letters of 1 mm in width. Needle: Ball point Notes: Hoop tightly with cut-away backing. Fabric may stretch with short stitches. Keep fill stitches long and do not pack stitches too tight or the fabric will curl. This fabric will take larger designs and lots of letters. Notes for RH05: Works well with all designs, but take care in placement, as the placket is different than the men's companion. Collar can also be embroidered.</p>	<p>This information is intended to serve as a guide-line for embroiderers. San Mar is not responsible for the compromised integrity of Red House fabrics due to embroidery or decoration.</p>