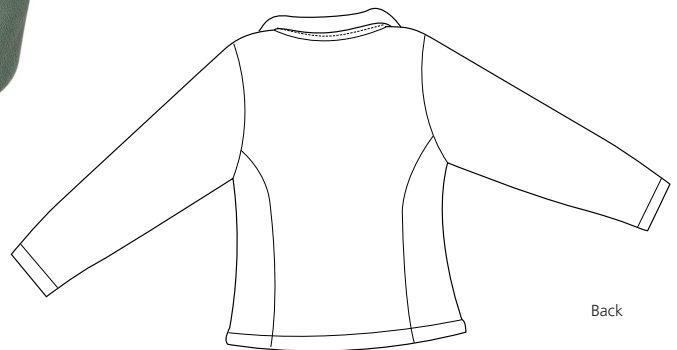


# Ladies R-Tek™ Fleece Cardigan

PORT | AUTHORITY®



Front



Back

## LP76

- \* 13-ounce \* 100% filament polyester R-Tek™ fleece \* Twill-trimmed neck tape
- \* 5-button placket with large dyed-to-match swirled, pearlized buttons
- \* Open cuffs and bottom hem \* Anti-pill \* Princess cut

### Care Instructions:

Machine wash warm. Wash inside out with like colors. Line dry. Do not bleach. Do not iron. Do not dry clean.

\*Warning: Not flame retardant. Avoid contact with open flame.

### Finished Measurements in Inches

Size	XS	S	M	L	XL	XXL	Plus 1X	Plus 2X
Width	18.5	19.5	20.5	22.5	24	25.25	26.5	29
Length	22.5	23.5	24.5	25.5	26.5	27	27.5	28.5
Sleeve	31.5	32.5	33.5	34.5	35.5	36	36.5	37
Collar Ht	2.75	2.75	2.75	2.75	2.75	2.75	2.75	2.75

Width measured 1" below armhole. Length measured from center back neck seam to bottom hem. Sleeve measured from center back neck seam to cuff.

### Color Chart

	Black
	Winter White
	Moss
	Light Pink

### Please Note:

Colors shown are approximate and for reference only. For closest match see PMS colors, or for exact match, returnable samples and grommited samples are available.

### Color Chart

Colors	Black	Winter White	Moss	Light Pink
Textile PMS	19-4305 TC	11-0103 TC	17-0115 TC	12-2906 TC
General PMS	Process Black	Warm Gray1 C	8321 C	705 C