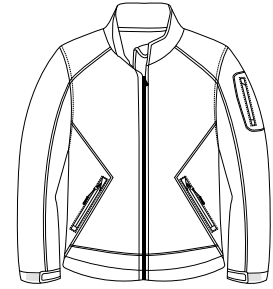
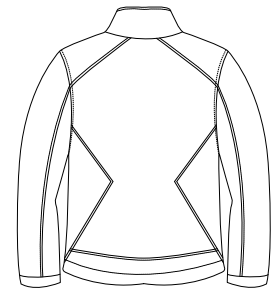


# Ladies Recycled Polyester Soft Shell Jacket

PORT | AUTHORITY®



Front



Back

## L797

\*63% recycled polyester, 32% recycled rayon, 5% spandex woven fabric bonded to 100% polyester fleece backing \* 1000MM waterproof rating \* 1000G/M2 breathability rating \* Includes a laminate film insert to repel water \* Gently contoured silhouette \* Storm flap with chin guard \* Ergonomic zipper pulls \* Dyed-to-match inner fleece \* Dyed-to-match zippers \* Patch pocket on left sleeve \*



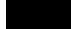
**Care Instructions:**  
Machine wash warm. Wash inside out with like colors. Line dry. Do not bleach. Do not iron. Do not dry clean.

### Finished Measurements in Inches

Size	XS	S	M	L	XL	XXL	1X	2X
Width	19	20	21	22.5	24	25.5	28	30.5
Length	22.5	23.5	24.5	25.5	26.5	27.5	28.5	29.5
Sleeve	30	31	32	33	34	35	35.5	36.5

Width measured 1" below armhole. Length measured from center back neck seam to bottom hem. Sleeve measured from center back neck seam to cuff.

### Colors

	Cypress Blue
	Cobblestone
	Black

Please Note:  
Colors shown are approximate and for reference only. For closest match see PMS colors, or for exact match, returnable samples and grommeted samples are available.

### Color Chart

Colors	Cypress Blue	Cobblestone	Black
Textile PMS	No Match	No Match	No Match
General PMS	5275 C	Warm Grey 6 C	Process Black C