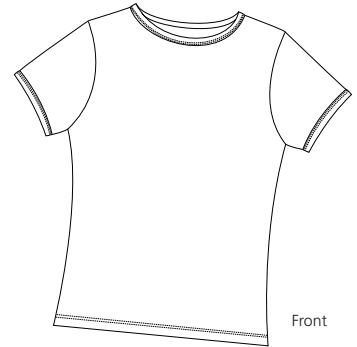


# Ladies Soft Touch Short Sleeve Shirt

PORT | AUTHORITY®



Front



Back

**L489**

- \* 55/45 Pima cotton/Modal \* Greater softness than other cotton blends
- \* Shrink, pile and fade resistant \* Crew neck \* Shapely fit

**Care Instructions:**

Machine wash cold with like colors.  
Do not bleach. Lay flat to dry.  
Warm iron if necessary.

**Finished Measurements in Inches**

Size	XS	S	M	L	XL	XXL	Plus 1X	Plus 2X
Chest	15.5	16.5	17.5	18.5	20	21.5	24	27
Length	22.25	23	23.75	24.5	25	25.5	30	33
Sleeve	6.25	6.5	6.75	7	7.25	7.5	8.5	9.5
Neck Drop	2.75	3	3.125	3.25	3.375	3.75	4.25	4.25

Chest width measured 1" below arm hole. Body length measured from high point shoulder seam to hem.  
Sleeve measured from shoulder seam to hem. Front neck drop measured from high point shoulder.

**Colors**

	Black
	Blueberry
	Deep Rose
	Pink
	Apple Green
	White

**Please Note:**

Colors shown are approximate and for reference only. For closest match see PMS colors, or for exact match, returnable samples and grommeted samples are available.

**Color Chart**

Colors	Black	Blueberry	Deep Rose	Pink	Apple Green	White
Textile PMS	19-4203TC	17-3919 TC	17-1740 TC	12-1708 TC	13-0331 TC	11-4201 TC
General PMS	Process Black	535 C	703 C	176 C	577 C	663 C