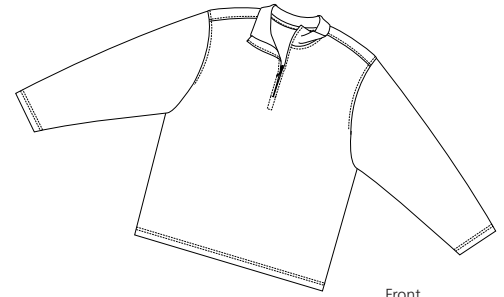
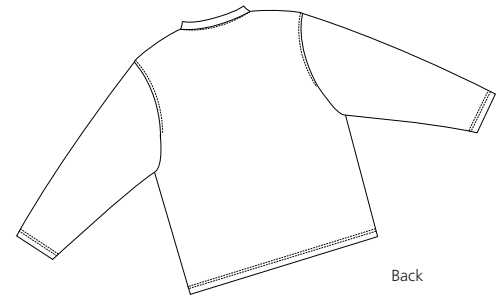


Silk Touch® Mesh Knit 1/4 Zip Pullover



Front



Back

K506

- * 6.2-ounce, 65/35 cotton/polyester blend
- * Open bottom hem and cuffs
- * Antique brass-finished zipper

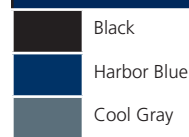
Care Instructions:
Machine wash cold. Wash with like colors. Do not bleach. Tumble dry low. Warm iron if necessary.

Finished Measurements in Inches

Size	XS	S	M	L	XL	2X	3X	4X
Chest	18	20	22	24	26	28	30	32
Length	28.5	29.5	30.5	31.5	32.5	33.5	34.5	35.5
Sleeve	33	35	36	37	38	39	40	41
Collar	7	7.5	8	8.5	9	9.5	10	10.5
Collar Height	2.75	2.75	2.75	2.75	2.75	2.75	2.75	2.75
Zipper	8	8	8	9	9	9	10	10

Chest width measured 1" below arm hole. Collar measured seam to seam.
Zipper full length. Sleeve length measured from center back neck seam to hem.
Body length measured from back neck seam to hem.

Colors



Please Note:
Colors shown are approximate and for reference only. For closest match see PMS colors, or for exact match, returnable samples and grommited samples are available.

Color Chart

Colors	Black	Harbor Blue	Cool Gray
Textile PMS	19-4203TC	19-4030 TC	18-4018 TC
General PMS	Process Black	648 C	7545 C