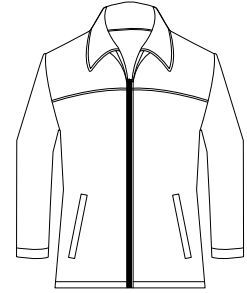
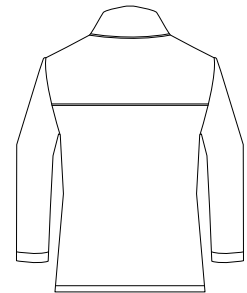


# Hip Length Wool Jacket

PORT AUTHORITY®



Front



Back

## J786

- \* 17.7-ounce, 61/30/9 lambs wool/polyester/rayon \* Antique nickel zipper \* 100% nylon lining
- \* Self-fabric internal pocket with snap closure \* Port Pocket™ engineering for easy embroidery
- \* Open hem

### Care Instructions:

Machine wash cold.  
Do not dry clean, do not iron.  
Do not bleach, do not tumble dry.

### Finished Measurements in Inches

Size	XS	S	M	L	XL	2XL	3XL	4XL
Width	20.5	22	23.5	25	26.5	28	29.5	31
Length	26.75	27.25	27.75	28.25	28.75	29.25	29.75	30.25
Sleeve	32.5	33.25	34	34.75	35.5	37	37	37.75
Areas for Decoration	Left Chest / Right Chest / Full Back			Port Pocket™		NA		

### Colors

Black

### Please Note:

Colors shown are approximate and for reference only. For closest match see PMS colors, or for exact match, returnable samples and grommeted samples are available.

Collar measured center back seam to top hem, Chest width 1" below arm hole, Side pocket from top to bottom of opening, Body length from back neck seam to hem, Sleeve length from center back seam to hem

### Color Chart

Jacket Colors	Black
Textile PMS	No Match
General PMS	Process Black C