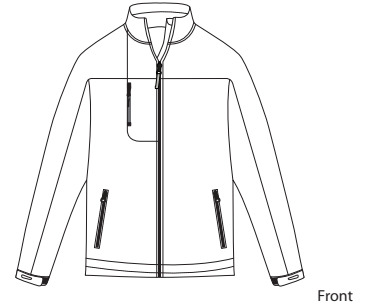


# Lightweight Soft Shell Jacket

PORT AUTHORITY®



Front



Back

## J723

\* 100% polyester stretch interlock shell bonded to polyester interlock with laminated film insert to repel water and wind \* Constructed from fine yarn for a luxurious hand \* 1000MM water-proof rating \* 1000G/M2 breathability rating \* Cinch toggle for weather protection on back of collar \* Comfortable chin guard/storm flap \* Ergonomic zipper pull \* Zippered chest pocket \* Adjustable molded tab cuffs \* Secure front zip pockets \* Drop tail with toggle and drawcord for adjustability \*

Care Instructions:  
Machine wash cold.  
Do not dry clean, do not iron.  
Do not bleach, do not tumble dry.

### Finished Measurements in Inches

Size	XS	S	M	L	XL	2XL	3XL	4XL
Length	29	29.5	30	30.75	31.5	32.25	33	33.75
Chest	20.5	22.5	24	25.5	27	28.5	30	31.5
Sleeve	30.5	32.5	34.5	35.5	36.5	37	37.5	38
Areas for Decoration	Left Chest / Right Chest / Full Back				Port Pocket™		NA	

### Colors

Black/Black
Sand Dune/Black
Twilight/Black

Please Note:  
Colors shown are approximate and for reference only. For closest match see PMS colors, or for exact match, returnable samples and grommeted samples are available.

Collar measured center back seam to top hem, Chest width 1" below arm hole, Side pocket from top to bottom of opening, Body length from back neck seam to hem, Sleeve length from center back seam to hem

### Color Chart

Jacket Colors	Black	Sand Dune	Twilight
Textile PMS	No Match	No Match	No Match
General PMS	Process Black C	8021 C	7545 C