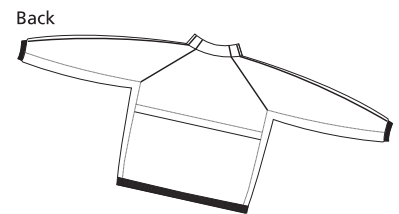
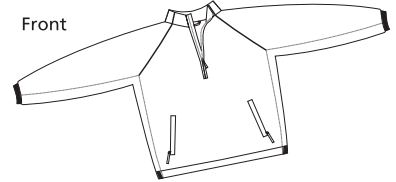


# Micro-Tek™ Microfiber Wind Shirt

**Sport-Tek™**  
By Port Authority®



## J711

- \* contrast piping on raglan sleeves and chest
- \* Stripes also extend over the 1/4-zip cadet collar
- \* zipper sash pockets \* back vent \* Interior mesh yolk
- \* elastic waist and cuffs





### Finished measurements in inches

|        | XS   | S     | M    | L     | XL   | 2XL   | 3XL   | 4XL   |
|--------|------|-------|------|-------|------|-------|-------|-------|
| Length | 24.5 | 25.5  | 26.5 | 27.5  | 28.5 | 29.5  | 30.5  | 31.5  |
| Chest  | 22.5 | 24.5  | 26   | 27.5  | 29   | 30.5  | 32    | 33.5  |
| Sleeve | 20   | 21.25 | 22.5 | 23.75 | 25   | 26.25 | 27.5  | 28.75 |
| Neck   | 9.5  | 9.75  | 10   | 10.25 | 10.5 | 10.75 | 11.25 | 11.75 |

### Care Instructions:

Machine wash cold.  
Use mild detergents. Do not iron.  
Do not bleach. Tumble dry low.  
Do not dry clean.

### Colors

|   |             |
|---|-------------|
|  | Black/White |
|  | Navy/White  |
|  | Red/White   |
|  | Royal/White |

### Color chart

| Colors      | Black/White     | Navy/White | Red/White | Royal/White |
|-------------|-----------------|------------|-----------|-------------|
| Textile PMS | N/A             | N/A        | N/A       | N/A         |
| General PMS | Processed Black | 296C       | 1955C     | 294C        |

### Please Note:

Colors shown are approximate and for reference only. For closest match see PMS colors, or for exact match, returnable samples and grommets samples are available.