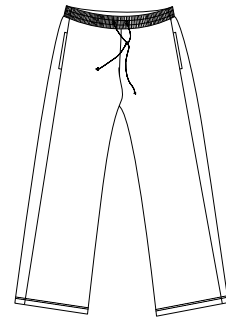
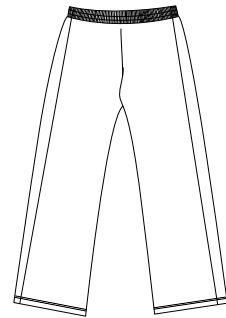


# Tricot Track Pant



Front



Back

## DT502

\* 100% polyester tricot \* Soft, brushed lining \* Triple-needle stitched waistband with drawstring \* Side-seam zip pockets \* Open hem

**Care Instructions:**  
Machine wash warm. Wash with like colors. Do not bleach. Tumble dry low. Warm iron if necessary.

Finished Measurements in Inches								
Size	XS	S	M	L	XL	2XL	3XL	4XL
Waist Relax	14	15	16	17.5	19	20.5	22	23.5
Inseam	29	30	31	31	32	32.5	33	33.5

Waistband measured relaxed, side to side. Leg opening measured from seam to seam.  
Inseam measured from seam to hem. Thigh measured from seam to seam, 12" from waistband.

Colors	
	Black/Black

**Please Note:**  
Colors shown are approximate and for reference only. For closest match see PMS colors, or for exact match, returnable samples and grommets are available.

Color Chart	
<b>Body Color</b>	Black
Textile PMS	No Match
General PMS	Process Black C
<b>Trim Color</b>	Black
Textile PMS	No Match
General PMS	Process Black C