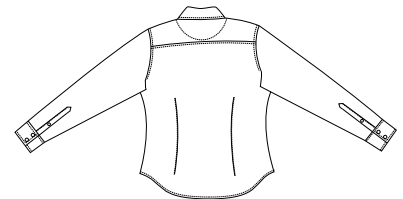


Ladies Brushed Cotton Shirt w/ Pocket



Front



Back

DT401

- * 100% brushed "rumpled" cotton * 3.6oz * Open collar
- * Double button cuffs (non-adjustable) * Thicker European buttons * Single-needle stitching
- * Floral print on interior back yolk and inside cuffs complements exterior coloring

Care Instructions:

Finished Measurements in Inches

Size	S	M	L	XL	XXL	Plus 1X	Plus 2X
Chest	18.75	19.75	20.75	21.75	22.75	23.75	24.75
Body	23.5	24	24.5	25	25.5	26	26.5
Sleeve	23.75	24.25	24.75	25.25	25.75	26.25	26.75
Sweep	18.75	19.75	20.75	21.75	22.75	23.75	24.75

Chest width measured 1" below armhole. Chest measurements shown are for front side only. Body length measured from center back to hem. Sleeve measured from shoulder seam to cuff. Bottom sweep measured across from seam to seam.

Colors

	Black
	Faded Lime
	Faded Turquoise
	Petal
	White

Please Note:

Colors shown are approximate and for reference only. For closest match see PMS colors, or for exact match, returnable samples and grommeted samples are available.

Color Chart

Colors	Black	Faded Lime	Faded Turquoise	Petal	White
Textile PMS	19-1102TC	13-0220TC	12-4608TC	11-2501TC	11-0601TC
General PMS	Black C	359C	2975C	691C	No Match