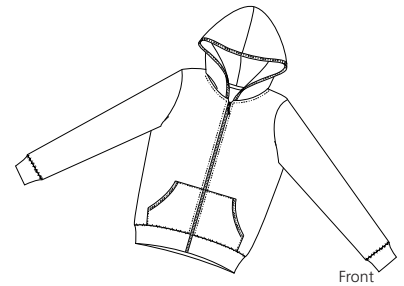
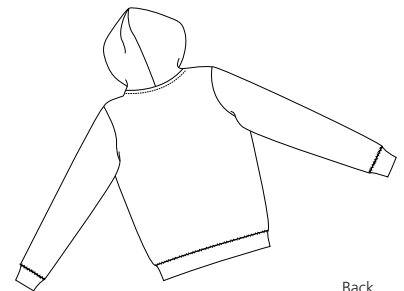


# Ladies Velour Fitted Full Zip Hoodie



Front



Back

## DT219

- \* 1 x 1 rib cuffs and waistband \* 80/20 cotton/poly velour
- \* Double needle flatlock bottom hem

### Care Instructions:

Machine wash warm. Wash with like colors. Do not bleach. Tumble dry low. Warm iron if necessary.

### Finished Measurements in Inches

Size	S	M	L	XL	XXL	Plus 1X	Plus 2X
Chest	16.5	17.5	18.5	20	21.5	23	24.5
Body	23	24	25	26	26	27	27
Sleeve	31.25	31.75	32.25	32.75	33.25	33.75	34.25

Chest width measured 1" below armhole. Body length measured from high point shoulder, down back, to hem. Sleeve length measured from center back seam to hem.

### Colors

	Bay Blue
	Black
	Blossom Pink
	Dark Cocoa
	White

### Please Note:

Colors shown are approximate and for reference only. For closest match see PMS colors, or for exact match, returnable samples and grommited samples are available.

### Color Chart

Body Colors	Bay Blue	Black	Blossom Pink	Dark Cocoa	White
Textile PMS	19-3712TC	19-5708TC	13-1510TC	19-1016TC	11-0602TC
General PMS	534C	Process Black	196C	412C	No Match