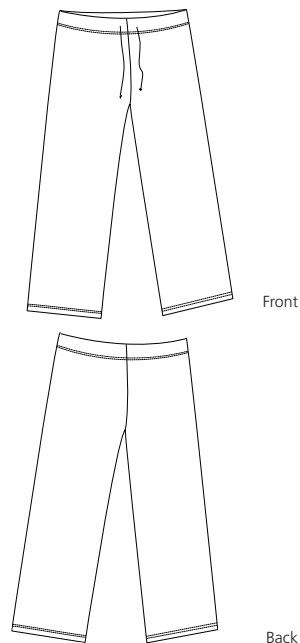


Ladies Straight Leg Fleece Pant



DT208

- * 100% * 7.5-ounce ring spun combed cotton
- * Drawstring waist with extra fabric for support
- * Reinforced throughout with double-needle stitching

Care Instructions:
Machine wash cold. Wash with like colors. Do not bleach. Tumble dry low. Warm iron if necessary.

Finished Measurements in Inches							
Size	S	M	L	XL	XXL	Plus 1X	Plus 2X
Waist Relaxed	17	18	19	20	21	22	23
Inseam	31	32	32.5	32.5	32.5	33	33.5

Colors	
	Black
	Deep Heather
	Navy
	Pink

Please Note:
Colors shown are approximate and for reference only. For closest match see PMS colors, or for exact match, returnable samples and grommated samples are available.

Color Chart				
Colors	Black	Deep Heather	Navy	Pink
Textile PMS	19-4203TC	No Match	19-3920TC	13-2010TC
General PMS	Process Black	No Match	533C	495C