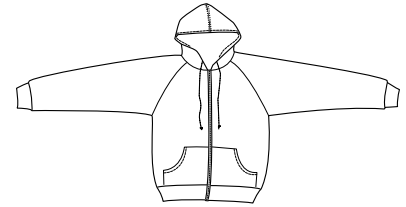
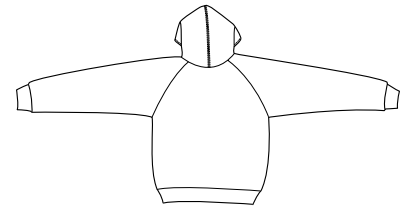


Ladies Full Zip Hooded Fleece



Front



Back

DT207

- * 7.5-ounce fleece
- * 100% ring spun combed cotton
- * Quality zipper
- * Dyed-to-match drawstring
- * Rib cuffs and hem

Care Instructions:

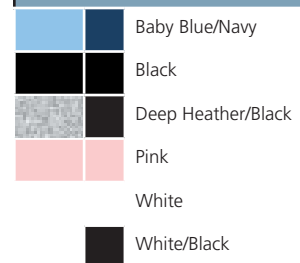
Machine wash cold. Wash with like colors. Do not bleach. Tumble dry low. Warm iron if necessary.

Finished Measurements in Inches

Size	S	M	L	XL	XXL	Plus 1X	Plus 2X
Chest	18.75	20.25	21.75	23.25	24.75	26.25	27.75
Body	23	24	25	26	26	27	27
Sleeve	28.5	29	29.5	30	30.5	31	31.5

Chest width measured 1" below armhole. Body length measured from high point shoulder to hem. Sleeve length measured from center back seam to hem.

Colors



Please Note:

Colors shown are approximate and for reference only. For closest match see PMS colors, or for exact match, returnable samples and grommited samples are available.

Color Chart

Body Colors	Baby Blue	Black	Deep Heather	Pink	White
Textile PMS	15-4020TC	19-4203TC	No Match	13-2010TC	11-0601TC
General PMS	543C	Process Black	No Match	495C	No Match
Sleeve Colors	Black	Navy			
Textile PMS	19-4203TC	19-3920TC			
General PMS	Process Black	533C			